

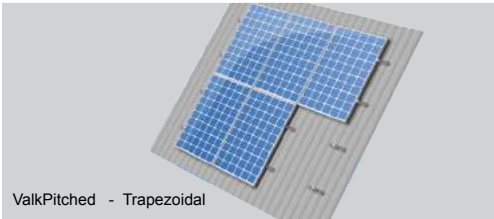
# Datasheet

## ValkPitched - Trapezoidal

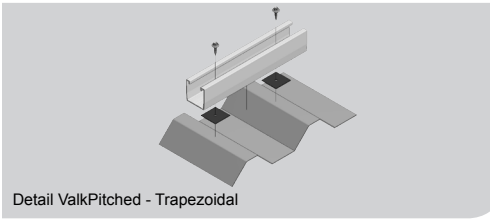
**VAN DER VALK**



Innovation House, Discovery Park  
 Ramsgate Road, Sandwich CT13 9FF  
 United Kingdom  
 T +44 (0)1304 897658  
 info@valksolarsystems.co.uk  
 www.valksolarsystems.co.uk



ValkPitched - Trapezoidal



Detail ValkPitched - Trapezoidal

### Technical specifications

- Mounting system for steel, aluminium, trapezoidal and corrugated roofs.
- Fixation by use of thin sheet screw.
- Minimum crown width: 25 mm.
- Watertight seal by neoprene ring on the thin sheet screw and rubber plates.
- Profiles equipped with pre-punched hole pattern.
- Panels can be installed in both portrait and landscape configuration.

### ValkPitched - Trapezoidal vs. competitive systems

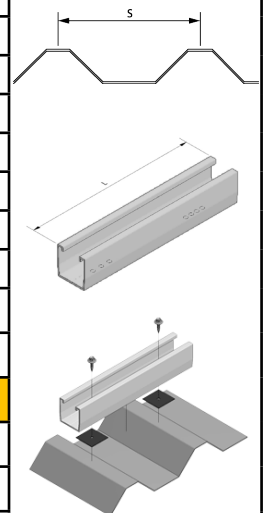
- Universal mid- and end-panel clamps (H 28-50 mm).
- Profiles provide a stable platform for panel mounting.
- Calculations and implementation according to Eurocodes.
- Very fast mounting.
- Low costs due to minimal material requirement.

### Project calculation

- With the use of a special calculation tool projects can easily be calculated.

### Article numbers

Profile lengths for portrait mounting		
Article numbers	Description	CtC (S)
Material type		EN AW 6060 (AlMgSi 0,5)
7270240	Alu. trapezoidal profile L = 240 mm	110 - 150 mm
7270280	Alu. trapezoidal profile L = 280 mm	150 - 190 mm
7270320	Alu. trapezoidal profile L = 320 mm	190 - 230 mm
7270360	Alu. trapezoidal profile L = 360 mm	230 - 270 mm
7270400	Alu. trapezoidal profile L = 400 mm	270 - 310 mm
7270440	Alu. trapezoidal profile L = 440 mm	310 - 350 mm
7270610	Alu. trapezoidal profile L = 610 mm	480 - 520 mm
701807000	Alu. trapezoidal profile L = 7000 mm	
Profile lengths for landscape mounting		
7269120	Alu. trapezoidal profile L = 120 mm EPDM incl.	
7270120	Alu. trapezoidal profile L = 120 mm	
7270240	Alu. trapezoidal profile L = 240 mm	
Fixation material		
779223	Alu. rivet	see overleaf for more specifications
773225	SS thin sheet screw	see overleaf for more specifications
779220	Rubber plate	see overleaf for more specifications



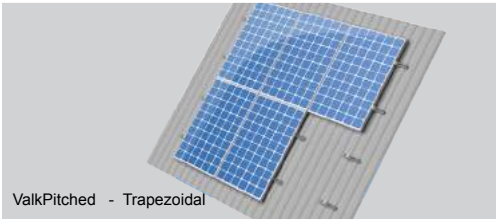
# Datasheet

## ValkPitched - Trapezoidal

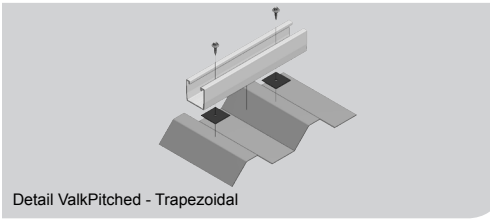
**VAN DER VALK**



Innovation House, Discovery Park  
 Ramsgate Road, Sandwich CT13 9FF  
 United Kingdom  
 T +44 (0)1304 897658  
 info@valksolarsystems.co.uk  
 www.valksolarsystems.co.uk



ValkPitched - Trapezoidal



Detail ValkPitched - Trapezoidal

### Specification table fixation material

Thin sheet screw			
Article number	773225		
Description	SS thin sheet screw with EPDM (E16) washer		
Size	6.0 x 25 mm		
Material	Bimetal (Stainless steel A2 / hardened steel)		
Plate thickness	Steel 0.5 - 1.25 mm en Aluminium 0.5 - 1.5 mm		
Advice max. torque	Steel plate	> 0.8 mm = 3 Nm	
	Steel plate	< 0.8 mm = 1 Nm	
	Aluminium plate	> 0.8 mm = 1 Nm	
	Aluminium plate	< 0.8 mm = 0.5 Nm	
Processing speed from 1600 to 1800 rev / min until the sheet is penetrated, then stop and tighten the screw slowly.			
Rubber plate			
Article number	779220		
Description	Rubber plate for trapezoidal profile		
Size	40 x 40 x 1 mm		
Material	EPDM 70 shore		
Central hole	Ø 5 mm		

### Gross indicative price list

ValkPitched - Trapezoidal   gross indicative price list	
Portrait	£ 0,040 per Wp
Landscape	£ 0,032 per Wp
• Prices based on standard approx L = 1650 mm, 250 Wp panel.	
• Indicative prices based on 100 kWp, thin sheet screws and a maximum roof height of 10 m.	