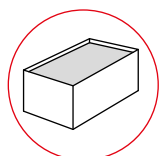
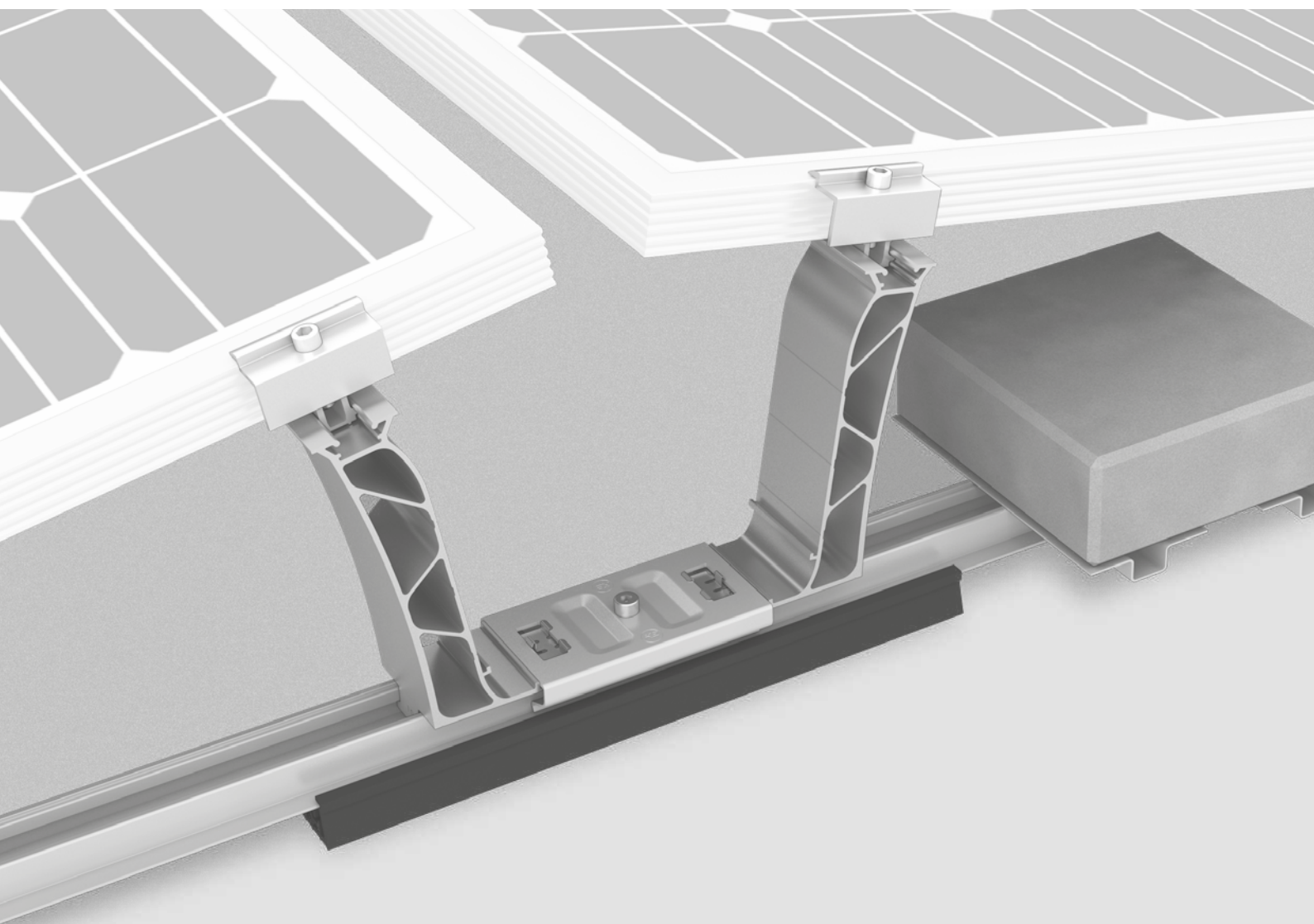


We support PV systems



MOUNTING SYSTEMS

Flat roof



		Flat roofs	Trapezoidal sheet metal	Single-sided	Double-sided	Mat V	Integrated ballast tray
▶ Dome Zero System	6	●	○	●	●	●	○
▶ Dome 6.10 System	8	●	○	●	●	●	○
▶ Dome V System	10	●	○	●	●	●	●
▶ Dome Classic System	12	●	●	●	●	○	○
▶ S-Dome Small System	14	●	●	●	○	○	○
▶ TiltUp Vento System	16	●	○	●	○	○	○
▶ Triangle / MultiAngle System	18	●	●	●	○	○	○
▶ Accessories	20						
▶ Notes	25						

● Suitable / integrated ○ Unsuitable / not integrated

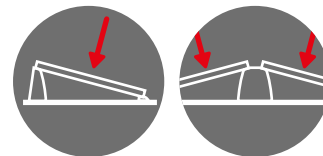
Warranty

We offer a 12-year warranty on all K2 system components.
k2-systems.com/en/guarantee



Module orientation

We offer flat roof systems with single-sided or double-sided elevations.

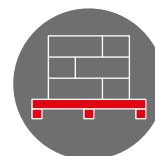


Statics and design loads

K2 mounting systems fulfil the calculation principles in accordance with Eurocode 1 and 9.

Pallet delivery

Many K2 mounting systems are shipped completely as palletised goods.



K2 Digital Toolbox

Easy.
Fast.
Safe.



WITH A FEW STEPS

Simply record the most important parameters on the smartphone with the K2 Check app. The data can be transferred seamlessly via a user account.

You can start planning directly with the key data in K2 Base. After your design, the data is transferred straight forwardly to the DocuApp. For the final documentation, many proofs are recorded, without any further work steps, and everything else is added shortly.

The K2 Digital Toolbox brings you many features, that make your everyday work easier and lead you quickly, easily and paperlessly to your goal.

CH

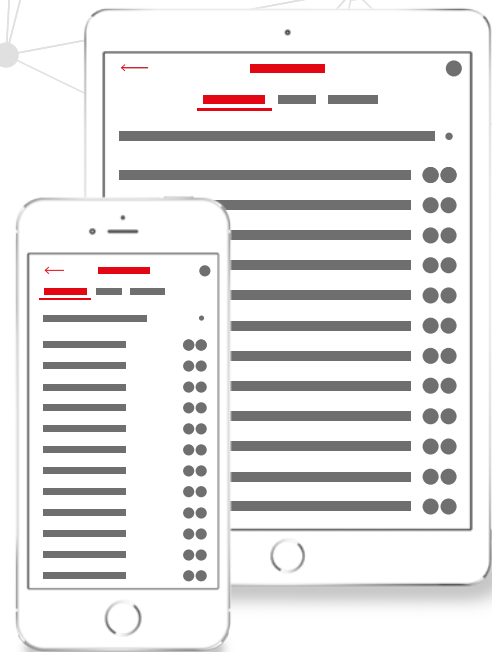
K2 CHECK APP

- / **Roof Check:** Capture all data and important photos on the roof.
- / **Smart Pocket Funktion:** Access to all projects and Base reports including installation and ballasting plan.
- / **Systempreis:** Calculate reliable prices directly.
- / **Produktkatalog:** All assembly systems including technical documentation, videos and references.
- / Free download in Google Play and App Store.

app.k2-systems.com ↗



K2 Base Feature: K2+ Interface transfers all entered data to important other planning tools of the inverter manufacturers and to the yield calculation [e.g. from SolarEdge or SMA] with one click. This allows you to shorten your planning times with K2+ and as multiple data entry is no longer necessary.



BA K2 BASE

- / Free planning in 5 easy steps available in many languages.
- / Planning with Google Maps satellite images
- / Graphical drawing tools
- / Optimal static system design including verifiable statics
- / K2+: Simple transfer of project data for further calculation of electrical planning in inverter tools.

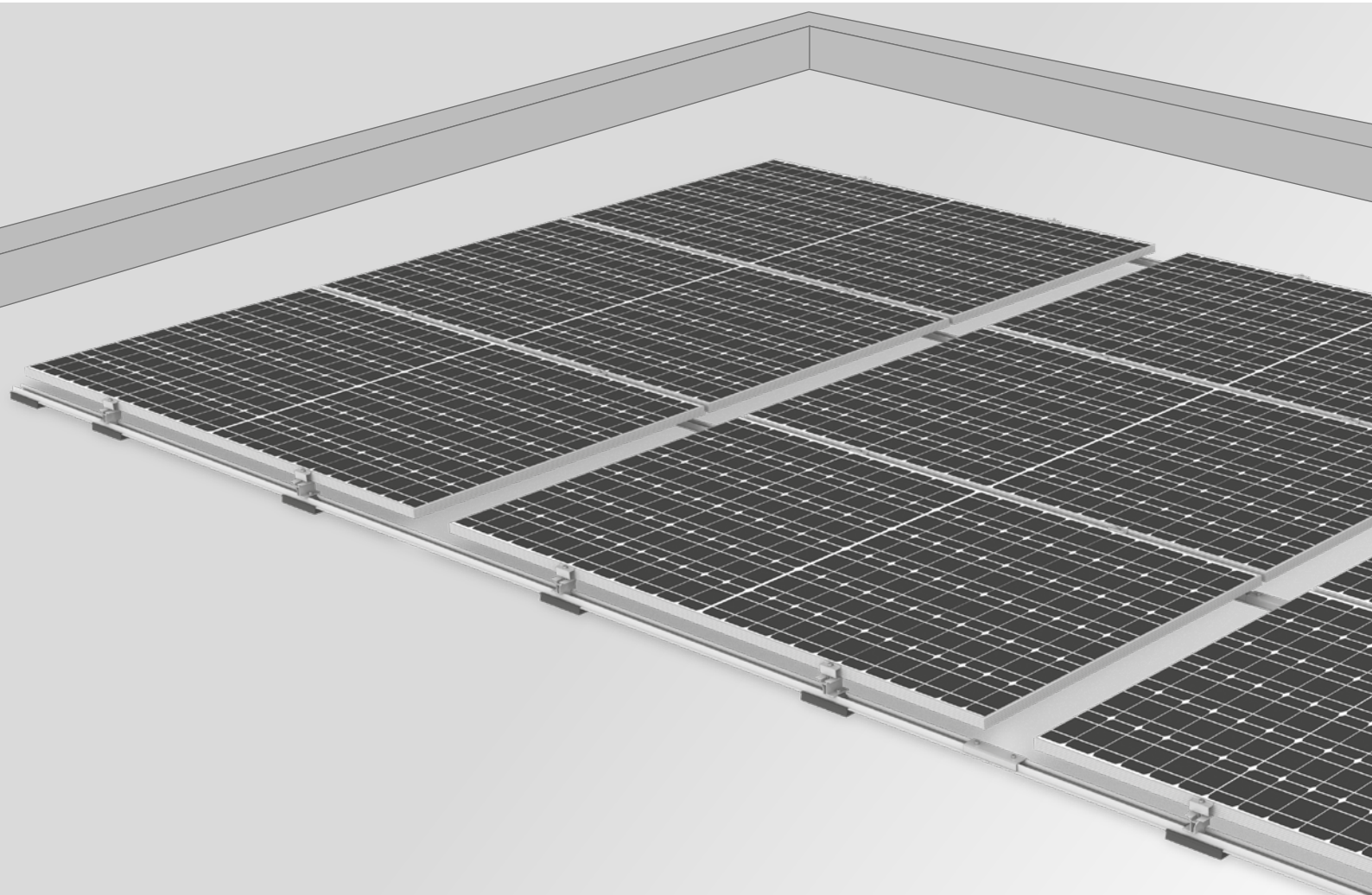
base.k2-systems.com

DO K2 DOCU APP

- / Digital tool to automate project documentation project documentation.
- / Less paperwork and document everything clearly with an app.
- / Take down the attachment directly on your smartphone and have it signed.
- / Automatic dispatch of the project documentation after acceptance.

docuapp.k2-systems.com

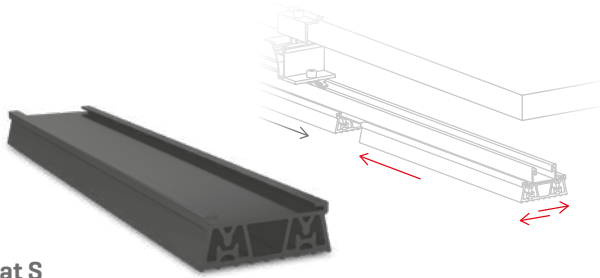
Dome Zero System



- / Roof-parallel mounting system for flat roofs with Dome 6 components
- / Suitable for roof pitches up to 10° with typical flat roof coverings
- / Placement in portrait orientation of modules
- / Very flat installation height - concealment behind a parapet is possible

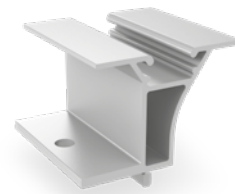


Components



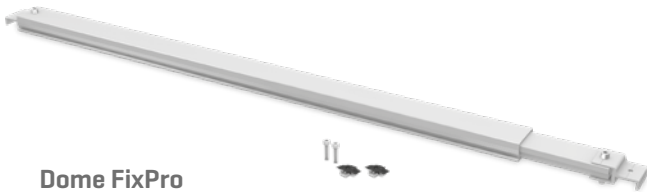
Mat S

- / Shear soft Mat S made of EPDM
- / Absorbs and compensates tolerances
- / High coefficients of friction reduce ballast



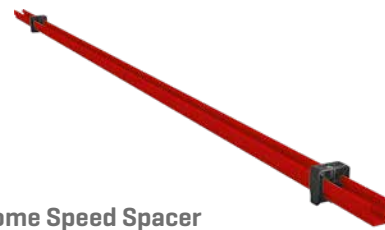
Dome Zero Peak

- / Modules are fixed at the quarter point of the long module side
- / Use of large modules possible



Dome FixPro

- / Fixed connection for roofs with inclination $< 10^\circ$
- / Required for roof pitches $\geq 3^\circ$
- / Recommended for roofs with low load reserves

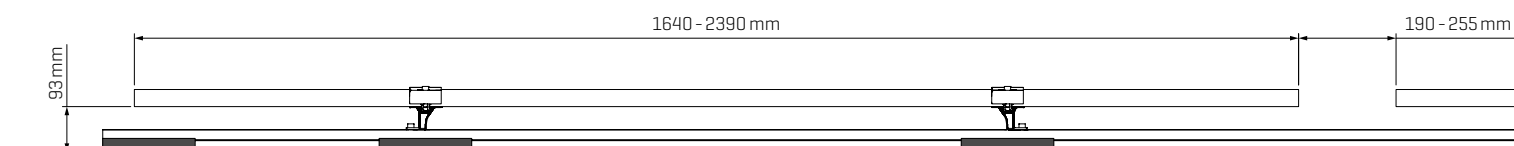


Dome Speed Spacer

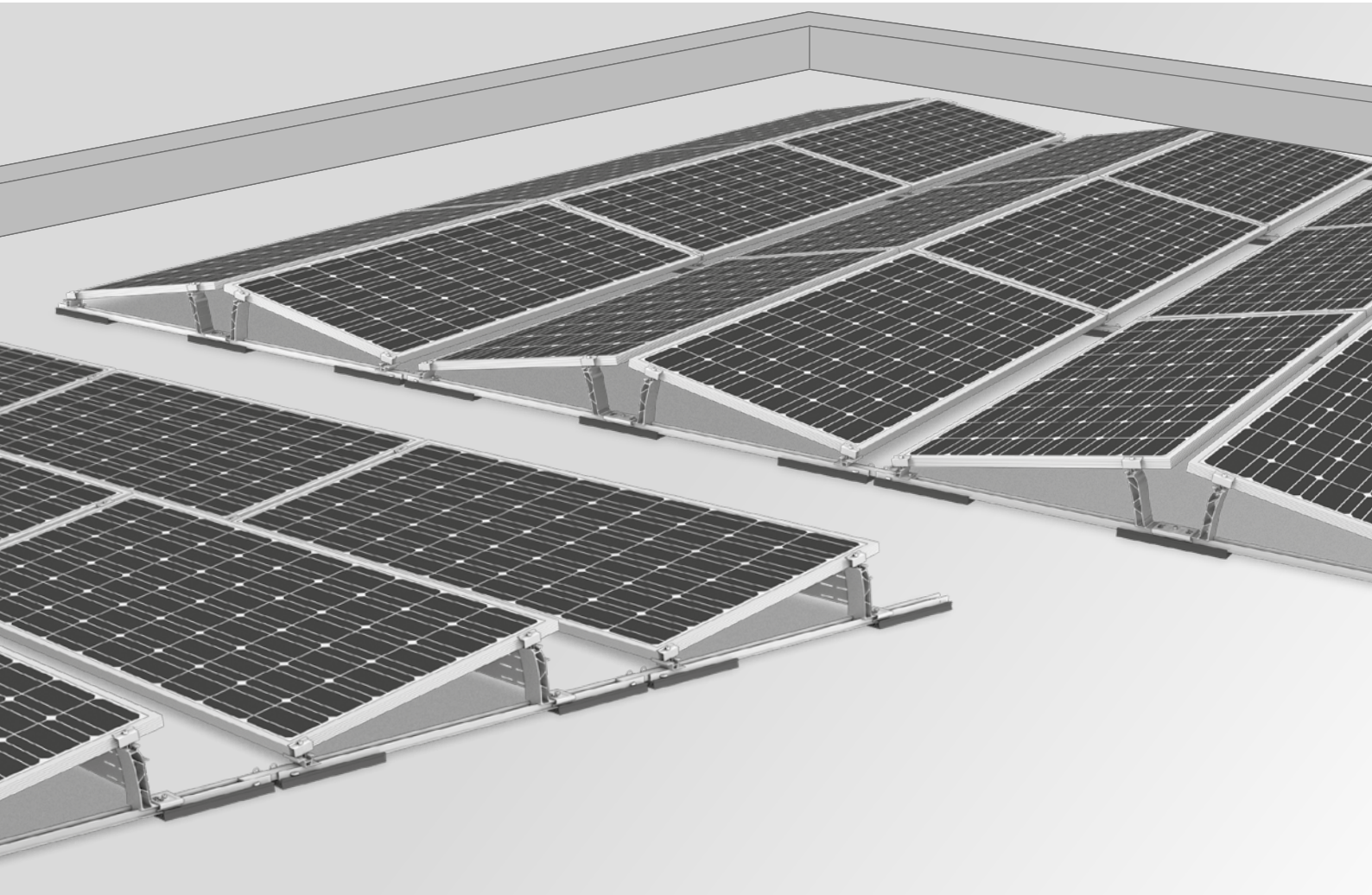
- / Simple alignment of the rails on the roof with the help of the flexible spacing gauge
- / Simply adjust module width and set up rail spacing
- / Suitable for all K2 flat roof systems

Technical data

	Dome Zero
Scope of application	Flat roofs $< 10^\circ$ with foil or bitumen covering, on concrete, gravel roofs
Fastening type/roof fixture	<ul style="list-style-type: none"> • Ballasted and no roof penetration: $\leq 3^\circ$. • With fixed connection Dome FixPro: $> 3^\circ$
Requirements	<ul style="list-style-type: none"> • Permissible module dimensions (L×W×H): 1640-2390 × 950-1305 × 30-50mm • Minimum system size: 2 modules
Thermal separation	max. 12m in rail direction max. 16m in transverse direction
Minimum distance to the roof edge	600 mm
Inclination angle	0°
Material	<ul style="list-style-type: none"> • Peak, Mounting Rail, FlatConnector-Set, SpeedPorter, Porter, MiniClamps: Aluminium EN AW-6063 T66, EN AW-6082 T6, EN AW-5754 • Mat S protective mat: EPDM • Small parts: Stainless steel [1.4301] A2-70



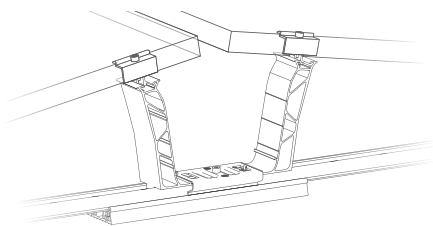
Dome 6 System



- / Flat roof all-rounder - solutions for all roof coverings
- / Clearly ballast-optimised system based on the latest wind tunnel standards
- / Secure anchoring with fixed connection for roofs $< 10^\circ$ and low load reserves
- / Component-optimised system

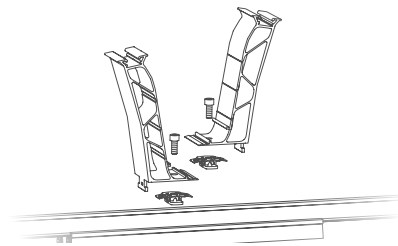


Properties



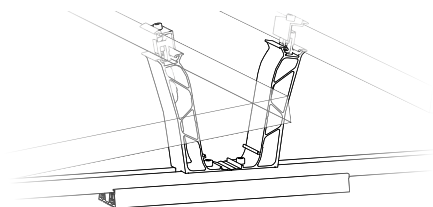
Dome 6 Xpress

- / 4 assembly steps for super-fast installation
- / Time-saving alignment of the rails with the Dome Speed Spacer gauge
- / Snap-in system for peaks and tool-free rail connectors



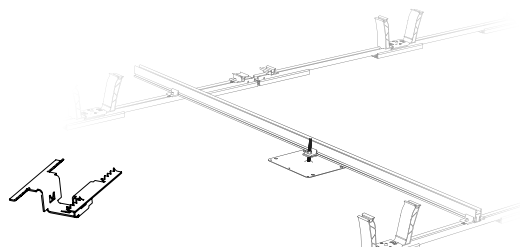
Dome 6 Classic

- / Flexible row spacing
- / Suitable for foil, bitumen, gravel and green roofs
- / Suitable for additional elevation on trapezoidal sheeting



Dome 6 Classic LS

- / For mounting on the long module side
- / For module sizes up to 2390 × 1170 mm
- / Based on Dome 6 Classic

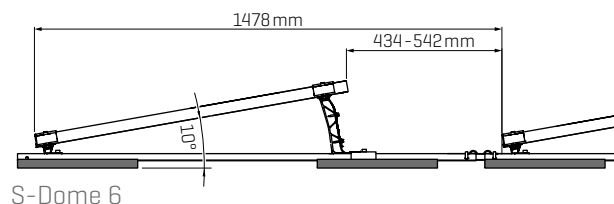
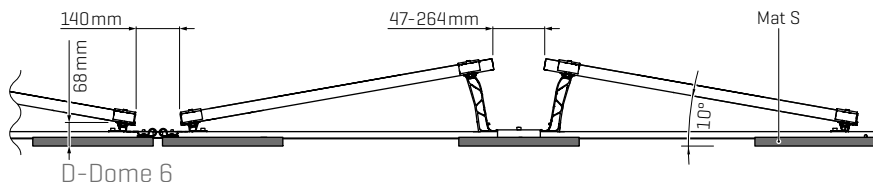


Fixed connection and potential equalisation

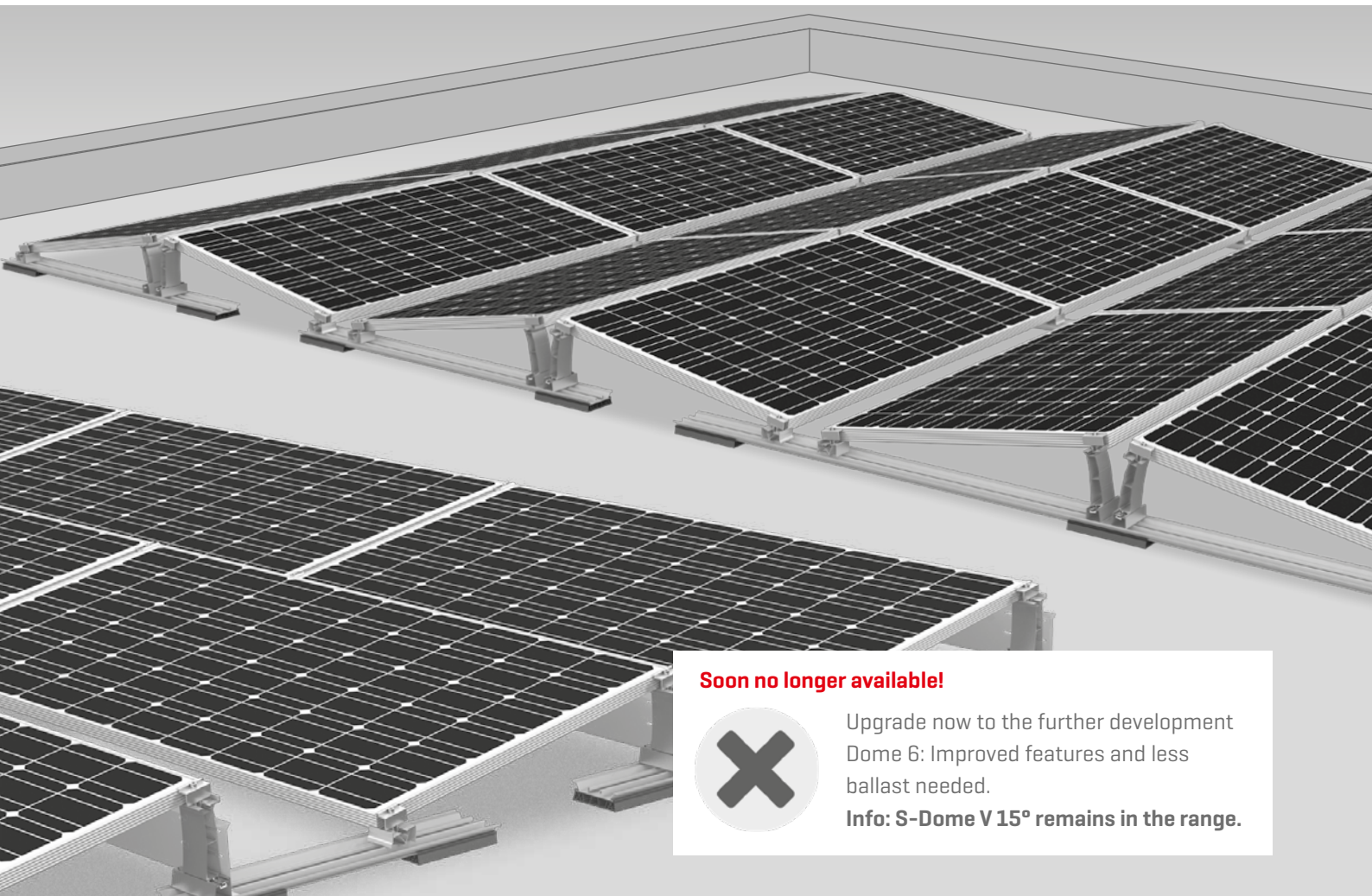
- / **Dome FixPro:** roof anchor with fixed connection for roof pitches <math>< 10^\circ</math>.
- / **TerraGrif:** for direct potential equalisation on the roof

Technical data

	D-Dome 6		S-Dome 6	
Scope of application	<math>< 10^\circ</math> with single ply membrane/bituminous roof covering, also on concrete, gravelled or green roofs			
Fastening type/roof fixture	<ul style="list-style-type: none"> • Ballasted and no roof penetration for inclination: $\leq 3^\circ$ / • With fixed connection at inclination with Dome FixPro: $> 3^\circ$ 			
Requirements	<ul style="list-style-type: none"> • Minimum system size: 2 supports (4 modules) • Permissible module dimensions (L×W×H): 1448-2390 × 950-1170 × 30-50 mm • Clamping at the short module side permitted [see k2-systems.com/en/approved-modules-dome-6] 		<ul style="list-style-type: none"> • Minimum system size: 2 modules 	
Technical specifications	Base rail	Module row	Base rail	Module row
Dome 6 Xpress	max. 16 m	max. 16 m	max. 15 m	max. 15 m
Classic 6 / Classic 6 LS	max. 12 m	max. 16 m	max. 12 m	max. 15 m
Minimum distance to the edge of the roof	600 mm			
Inclination angle	10°			
Material	<ul style="list-style-type: none"> • Peak, SD, mounting rail, MidPlate, EndPlate, Connector, Porter, MiniClamps: Aluminium EN AW-6063 T66 and AW-6082 T6 • Mat S protective mat: EPDM • Windbreaker: Steel with Magnelis coating / Small parts: stainless steel [1.4301] A2-70 			



Dome V System



Soon no longer available!



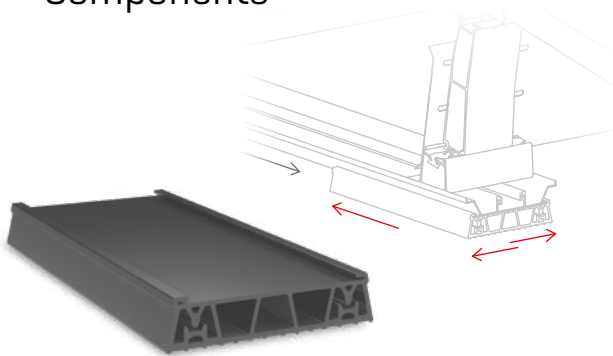
Upgrade now to the further development Dome 6: Improved features and less ballast needed.

Info: S-Dome V 15° remains in the range.

- / Clearly ballast- and component-optimized system due to better friction coefficient of the flexible support pad
- / Simultaneous assembly of modules and mounting system as well as reduced screw connections ensure faster installation
- / Reduced freight costs due to short short rail sections

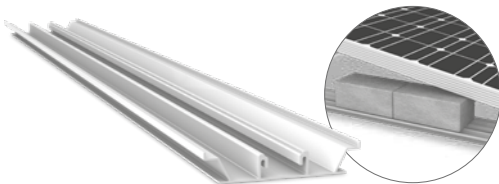


Components



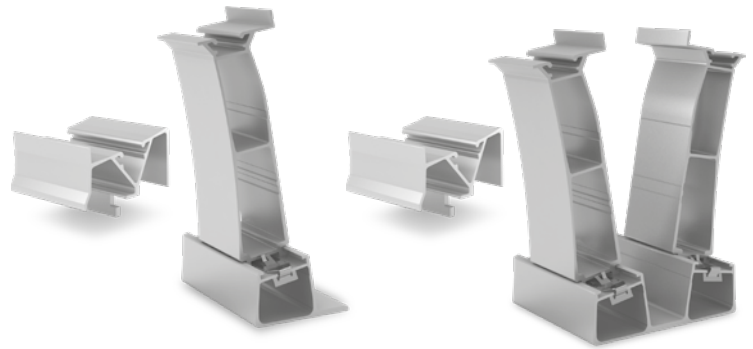
Mat V

- / Flexible Mat V made of EPDM – only 1 size and 1 variant (no aluminium lamination required)
- / Absorbs strains and compensates for tolerances
- / Lower Friction coefficients reduce ballast requirements



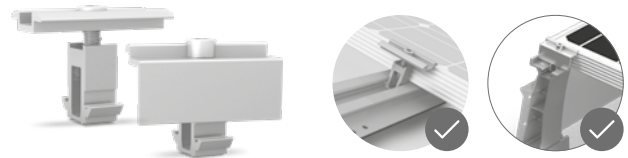
Rail mounting rail

- / Integrated ballast support almost eliminates the need for additional components
- / Short rails to accommodate the tolerances



Dome V elevation

- / Changed geometry and connections to accommodate tolerances
- / Single screw connection and fast screw-in assembly of the SD with fixation via module clamp
- / Low transport volume

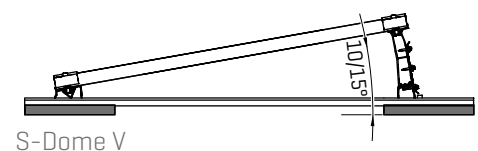
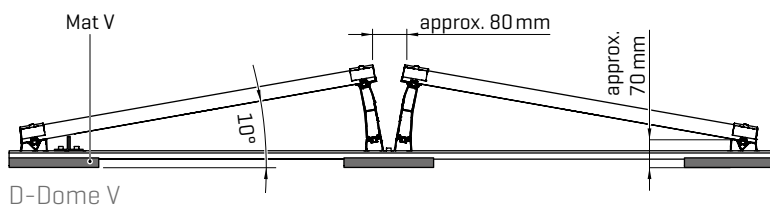


Universal module clamps: MiniClamp MC/EC

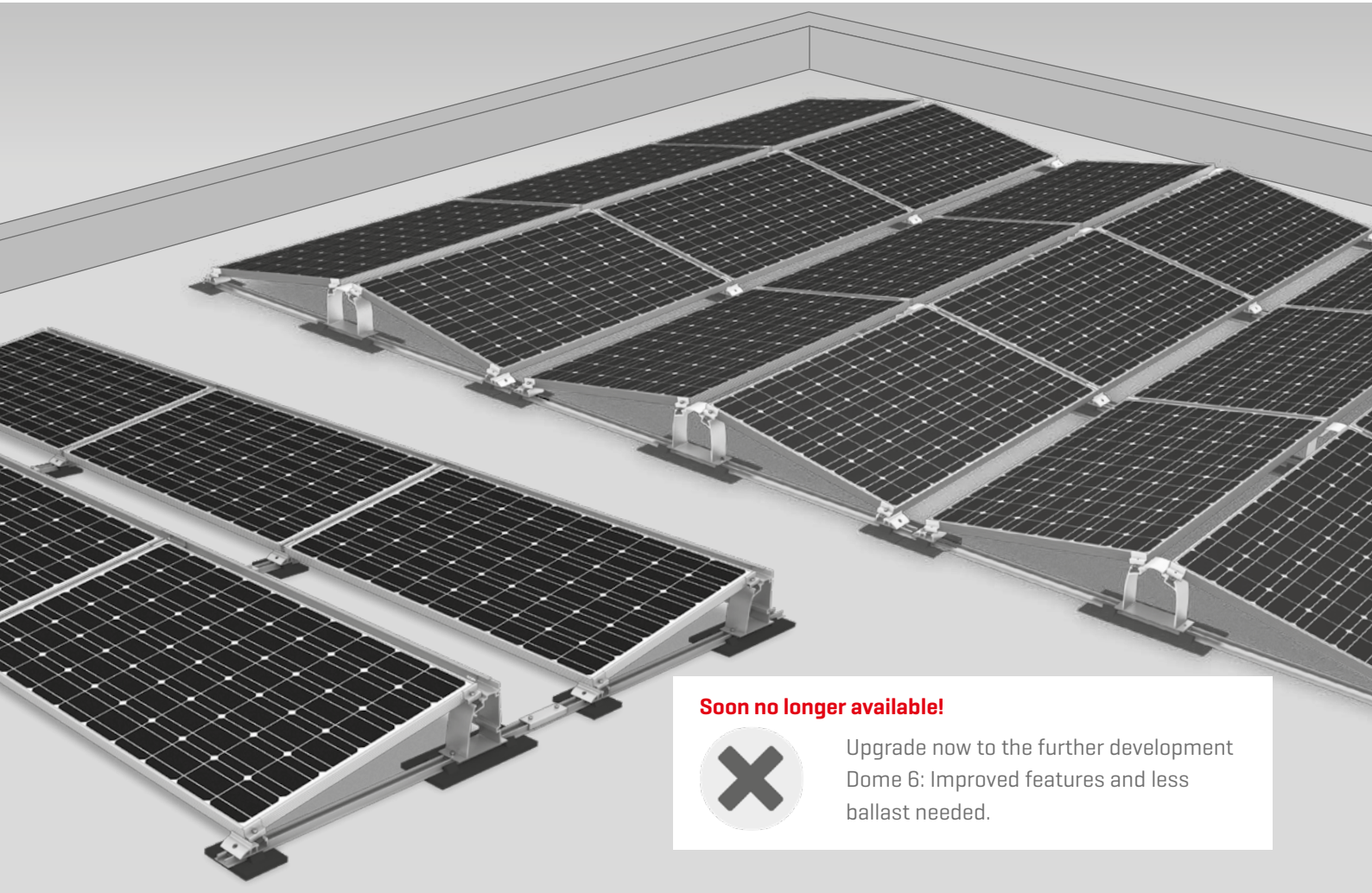
- / Clamping range 30 - 50 mm
- / Compatible with MiniRail, all Dome V Systems and Dome 6 Systems
- / Optional: Equipotential bonding with TerraGrif possible

Technical data

	D-Dome V	S-Dome V
Scope of application	Flat roofs $\leq 5^\circ$ with single ply membrane or bituminous roof covering, also on concrete, gravelled or green roofs	
Fastening type/roof fixture	Ballasted; no roof penetration for inclination $\leq 3^\circ$	
Requirements	<ul style="list-style-type: none"> Permissible module dimensions (L x W x H): 1386 - 2100 x 985 - 1053 x 30 - 50 mm Minimum system size: 2 supports (4 modules) Clamping in corner areas permitted [see k2-systems.com/en/approved-modules] 	<ul style="list-style-type: none"> Permissible module dimensions (L x W x H): 1550 - 1760/1880 - 2100 x 950 - 1053 x 30 - 50 mm Minimum system size: 2 modules
Technical specifications	<ul style="list-style-type: none"> Thermal separation after a maximum of 15.5 m Minimum distance to the edge of the roof 600 mm 	
Inclination angle	10°	$10^\circ / 15^\circ$
Material	<ul style="list-style-type: none"> Mounting rails, Peak, Basic, SD and MiniClamps: Aluminium EN AW-6063 T66 and AW-6082 T6 Windbreaker: Steel with Magnelis coating Mat V protective mat: EPDM Small parts: stainless steel [1.4301] A2-70 	



Dome Classic System



Soon no longer available!



Upgrade now to the further development Dome 6: Improved features and less ballast needed.

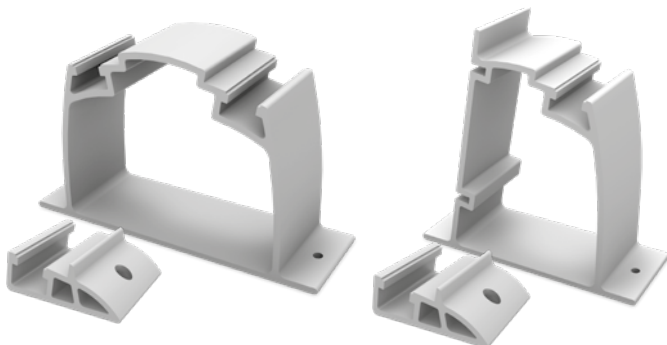
/ A system for statically difficult roofs and special applications

/ Can also be mounted on trapezoidal sheet metal roofs

/ Quick and easy handling



Components



Dome S1000 and Dome SD

Module support elements for one-sided and two-sided elevations



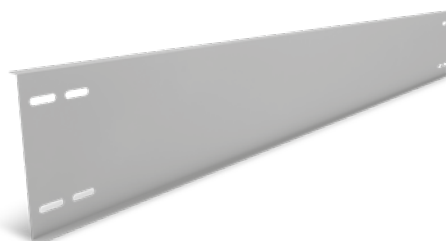
SpeedRail with building protection mats

Laminated or unlaminated building protection mats, depending on roof covering material



Ballast Management

SpeedPorter: For quick and easy ballasting

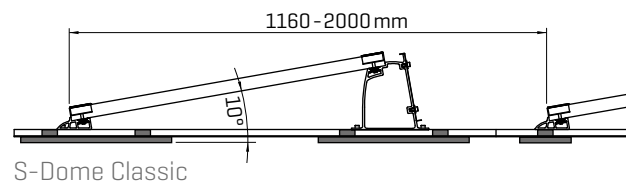
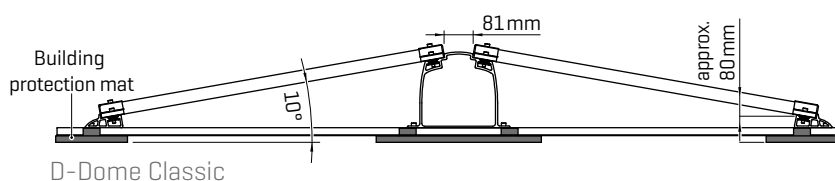


Windbreaker for S-Dome elevation

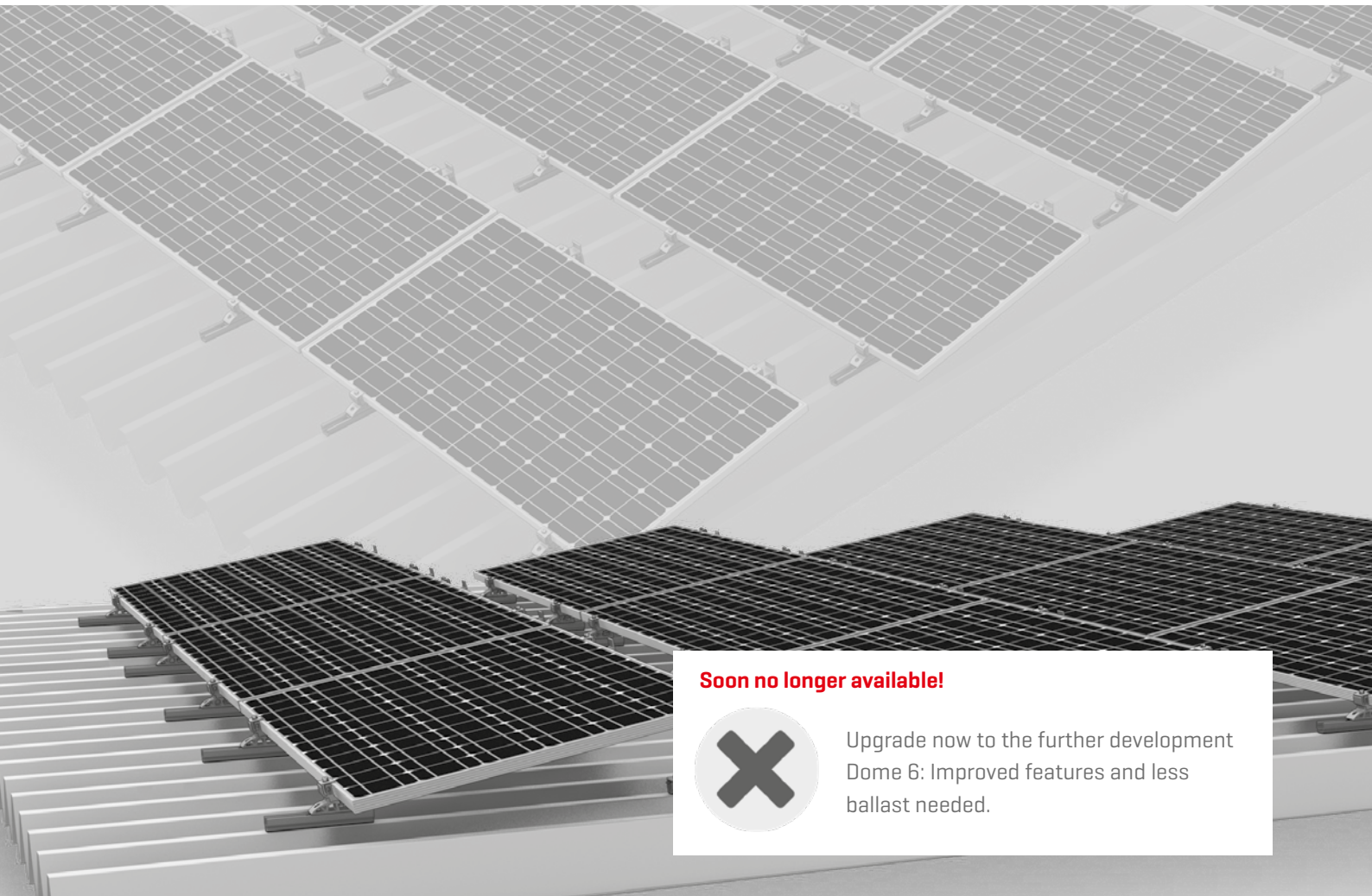
- / Wind deflection on the rear of Dome systems
- / Various lengths available

Technical data

	D-Dome Classic	S-Dome Classic
Scope of application	Flat roofs $\leq 5^\circ$ with single ply membrane or bituminous roof covering, also on concrete, gravelled or green roofs; also trapezoidal sheet metal roofs with continuous mounting rails	
Fastening type/roof fixture	Ballasted; no roof penetration for inclination $\leq 3^\circ$	
Requirements	<ul style="list-style-type: none"> • Permissible module dimensions [L x W x H]: 1386 - 2300 x 950 - 1100 x 30 - 50 mm • Minimum system size: 2 supports (4 modules) • Module approved for corner clamping [see k2-systems.com/en/approved-modules] 	<ul style="list-style-type: none"> • Permissible module dimensions [L x W x H]: 1386 - 2067 x 950 - 1100 x 30 - 50 mm • Minimum system size: 2 modules
Technical specifications	<ul style="list-style-type: none"> • Thermal separation after max. 12 m [trapezoidal sheet metal 8.7 m] • Minimum clearance to roof edge 600 mm 	
Inclination angle	10°	
Material	<ul style="list-style-type: none"> • Mounting rails, D-/S-Dome, Dome SD, Windbreaker, module clamps, rail connectors: Aluminium EN AW-6063 T66 • Building protection mat with or without aluminium lining [PUR-bound rubber granules] • Windbreaker: Steel with Magnelis coating • Small parts: Stainless steel [1.4301] A2-70 	



S-Dome Small System



Soon no longer available!



Upgrade now to the further development Dome 6: Improved features and less ballast needed.

/ For a roof inclination of up to 15° on trapezoidal sheet metal

/ Economical in terms of materials and transportation; clever connections and strong holding power

/ The perfect combination of the all-round MultiRail component and load-optimised, slim 10° elevations



Components



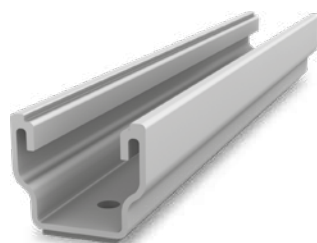
Dome S1000 Small

Narrow elevation module support element



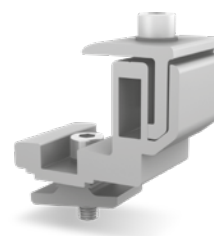
Dome SD Small

Narrow module support element



MultiRail 25

- / Length 250 mm
- / With four boreholes for roofs with up to 15° inclination

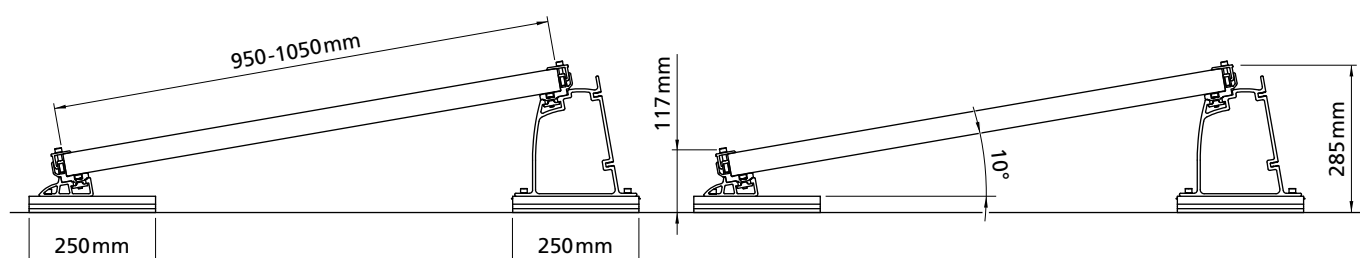


FlexClamp Small

- / For clamping on the long side of module
- / Height adjustable

Technical data

	S-Dome Small
Scope of application	Flat or pitched roofs $\leq 15^\circ$ with trapezoidal sheet metal roofing
Fastening type / roof fixture	Attached with drilling screws in trapezoidal sheets, parallel to raised crests
Requirements	<ul style="list-style-type: none"> • Sheet thickness: ≥ 0.4 mm steel or ≥ 0.5 mm aluminium • Tensile strength for aluminium: 165 N/mm² • Tensile strength for steel: acc. to approval min. S235 in acc. with DIN EN 10025-1 • Crest width: min. 22 mm • Crest spacing: independent of crest distance
Inclination angle	10°
Material	<ul style="list-style-type: none"> • Mounting rails, Dome SD Small, Dome S1000 Small, FlexClamp Small: Aluminium [EN AW-6063 T66/ EN AW-6082 T6]; EPDM • Small parts: Stainless steel [1.4301] A2



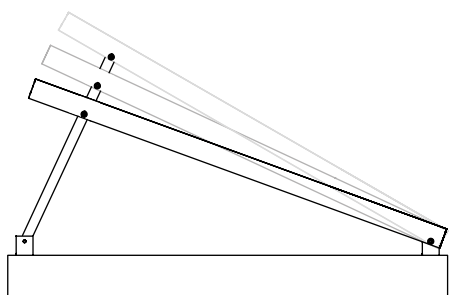
TiltUp Vento System



- / 3 different elevation angles: 20°, 25° and 30°.
- / Few components, many different module arrangements and suitable for larger modules
- / Flexible application options on the roof: ballasted with concrete foundation or direct connection with concrete anchors possible

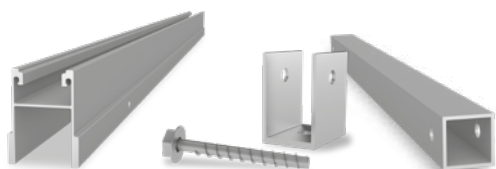


Features



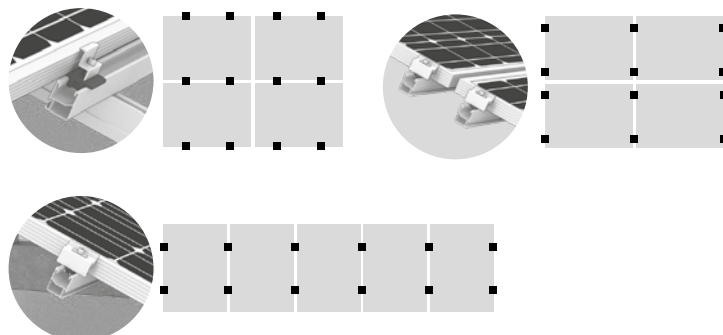
3 different elevation angles

- / All module arrangements in 3 elevation angles available: 20°, 25° and 30°
- / Component connections identical throughout



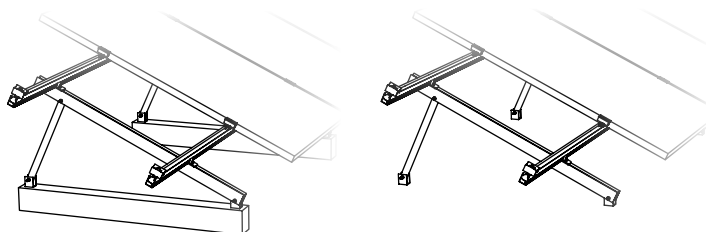
Few components

- / Refined system with well thought-out connections
- / Enables systemic storage and flexible application possibilities



Different module layouts

- / Portrait/landscape possible
- / Clamping on the short or long side



Various roof connections

- / Ballasted with concrete foundation: for almost every flat roof
- / Direct connection with concrete anchors possible

Technical data

	TiltUp Vento
Scope of application	Flat roofs ≤ 3° on concrete, gravelled or green roofs
Fastening type / roof fixture	<ul style="list-style-type: none"> ▪ Ballasted with concrete blocks ▪ Anchor directly into the concrete roof
Requirements	<ul style="list-style-type: none"> ▪ Permissible module dimensions [L × W]: max. 2293 × 1135 mm ▪ Clamping permitted on the short module frame side
Technical specifications	Thermal separation after a maximum of 15,5 m
Inclination angle	20° / 25° / 30°
Material	<ul style="list-style-type: none"> ▪ TiltUp Vento Foot, Beam, Brace, SingleRail 36 or 50, Module clamps, Climber Set 36/50: Aluminium EN AW-6063 T66 and AW-6082 T6 ▪ AddOn: Glass fibre reinforced PA ▪ Small parts: stainless steel [1.4301] A2-70

Triangle / MultiAngle System 10 - 45°



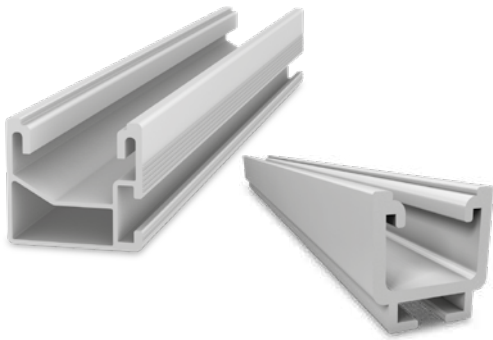
/ Individually customisable elevation angle

/ Universal module orientation

/ High flexibility and customised solutions

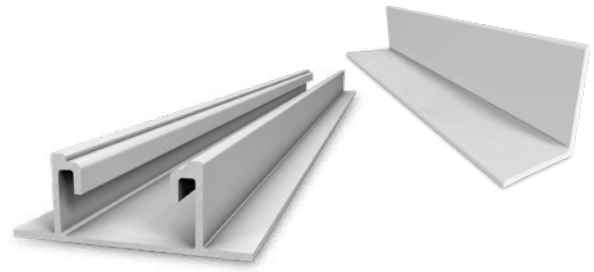


Components



Mounting rails

- / Triangle: SolidRail
- / MultiAngle: SingleRail



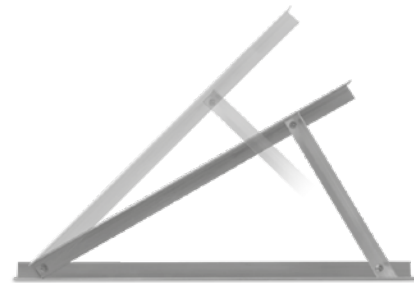
Base assembly

- / Triangle: L-Profile
- / MultiAngle: SpeedRail or L-Profile



Module orientation

- / Triangle: Landscape mounting with AddOn
- / MultiAngle: Portrait mounting, 2 heights for landscape mounting (clamps at corners or with AddOn)

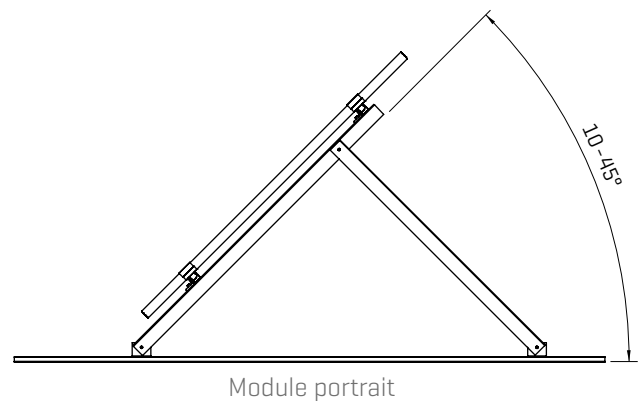
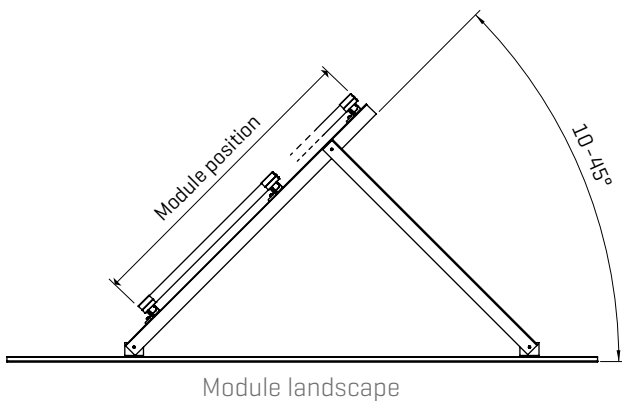


Elevation

- / Triangle: Available with 10 - 45°
- / MultiAngle: Individually customisable, 10 - 45°

Technical data

	Triangle / MultiAngle
Scope of application	Flat roofs, fields, or ground
Fastening type/roof fixture	Fastening or ballasting
Technical specifications	Thermal separation after max. 13.6 m
Inclination angle	10 - 45°, factory-default, or individually adjustable with MultiAngle
Material	<ul style="list-style-type: none"> • Mounting rails, module clamps: Aluminium [EN AW-6063 T66 / EN AW-6082 T6] • Also suitable for PE plates • Small parts: Stainless steel [1.4301] A2



Accessories

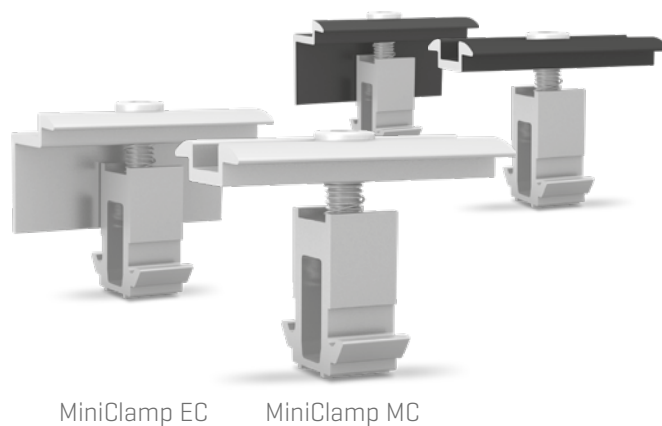
▶ Module clamps	18
▶ Self-tapping screw with sealing washer	20
▶ T-bolt and flange nuts with serration	20
▶ MK2 slot nuts with assembly clip	20
▶ Screw anchor, Multi Monti	20
▶ Washer	20
▶ StairPlate-Set	21
▶ Lightning protection clamp Multi Sets	21
▶ Flat roof cable routing	21
▶ Dome Speed Spacer	22
▶ TerraGrif equipontential bonding	22
▶ Cable Manager	22

Module clamps

MiniClamp MC and EC

For the Dome 6, Dome V, MiniRail and MicroRail systems we use the universal and rotatable MiniClamps MC/EC. MiniClamp MC and EC are universal clamps with a clamping range of 30 - 50 mm.

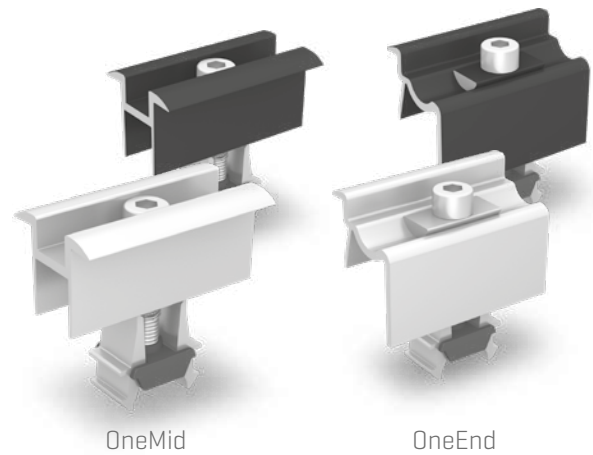
Description	Item number
MiniClamp MC, middle clamp, aluminium mill finish	2002558
MiniClamp MC, middle clamp, black anodised	2002609
MiniClamp EC, end clamp, aluminium mill finish	2002559
MiniClamp EC, end clamp, black anodised	2002610



Universal module clamps OneMid and OneEnd

These module clamps are suitable for the most common module frame heights of 30 - 42 mm. Compatible with SingleRail, SpeedRail, MultiRail, SolidRail plus Dome Classic.

Description	Item number
OneMid, middle clamp, aluminium mill finish	2003071
OneMid, middle clamp, black anodised	2003072
OneEnd, end clam, aluminium mill finish	2002514
OneEnd, end clam, black anodised	2002589

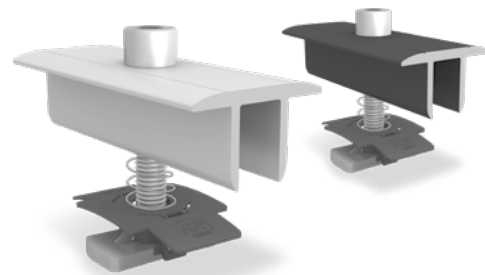


OneMid

OneEnd

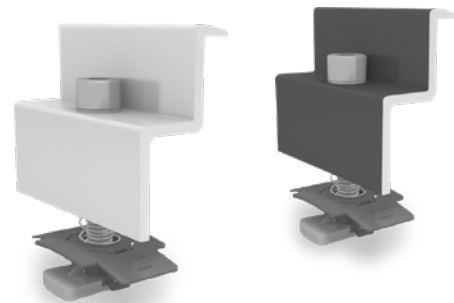
Module middle clamps XS

Module frame height / description	Item number
30 - 33 mm / M8×50, aluminium mill finish	1005156
30 - 33 mm / M8×50, black anodised	1005157
34 - 38 mm / M8×50, aluminium mill finish	1003586
34 - 38 mm / M8×50, black anodised	1005158
39 - 44 mm / M8×60, aluminium mill finish	1004908
39 - 44 mm / M8×60, black anodised	1005159
45 - 48 mm / M8×65, aluminium mill finish	1005143
45 - 48 mm / M8×65, black anodised	1005160
49 - 50 mm / M8×70, aluminium mill finish	1004407
49 - 50 mm / M8×70, black anodised	1005161



Module end clamps

Module frame height / description	Item number
30 - 31 mm / M8×30, aluminium mill finish	1005345
30 - 31 mm / M8×30, black anodised	1005347
32 - 33 mm / M8×30, aluminium mill finish	1005344
32 - 33 mm / M8×30, black anodised	1005346
34 - 36 mm / M8×30, aluminium mill finish	1005169
34 - 36 mm / M8×30, black anodised	1005268
37 - 38 mm / M8×30, aluminium mill finish	1005290
37 - 38 mm / M8×30, black anodised	1005293
39 - 41 mm / M8×35, aluminium mill finish	1005170
39 - 41 mm / M8×35, black anodised	1005269
42 - 44 mm / M8×35, aluminium mill finish	1005291
42 - 44 mm / M8×35, black anodised	1005295
45 - 47 mm / M8×40, aluminium mill finish	1005171
45 - 47 mm / M8×40, black anodised	1005270
48 mm / M8×40, aluminium mill finish	1005292
48 mm / M8×40, black anodised	1005296
49 - 50 mm / M8×45, aluminium mill finish	1005172



Accessories

Self-tapping screw with sealing washer

Thin sheet screw, chip-free; approved for steel/aluminium sheets with a minimum thickness of 0.4/0.5 mm.

Material: Stainless steel A2, EPDM

Type	Item number
6 × 25 mm, SW 8, sealing washer Ø 16 mm	1005207
6 × 38 mm, SW 8, sealing washer Ø 16 mm	1005193



T-bolt and flange nuts with serration

T-bolt for use in the lower chamber of K2 SolidRail rails.

Head form: 28/15

Head dimensions: 22.5 × 10.5 × 4 mm

Material: Stainless steel A2 1.4301

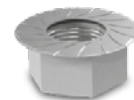
Type	Item number
M10×20	1000637
M10×30	1000041
M8×20	1000614
M8×30	1000368



The serrated nut [similar to ISO 4161] prevents it from loosening.

Material: Stainless steel A2

Type	Item number
M8	1000043
M10	1000042



MK2 slot nuts with assembly clip

The MK2 slot nuts can be used at any point on the K2 rails. They automatically lock in place. Subsequently, they can easily be moved about in the rail by pressing them lightly.

Material: Stainless steel 1.4301 + PA or aluminium + PA

Type	Item number
Stainless steel	1001643
Aluminium	2000034



Screw anchor, Multi Monti

Multi Monti screw anchor [Heco] for fastening to concrete; min. borehole depth 40 mm. Steel surface: galvanised and blue passivated, head diameter 17 mm, nominal bore diameter 6 mm

Material: galvanised steel

Drive: TX 30

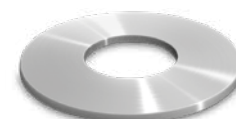


Washer

Safety mechanism for installing S-Dome Windbreakers.

Material: Stainless steel A2

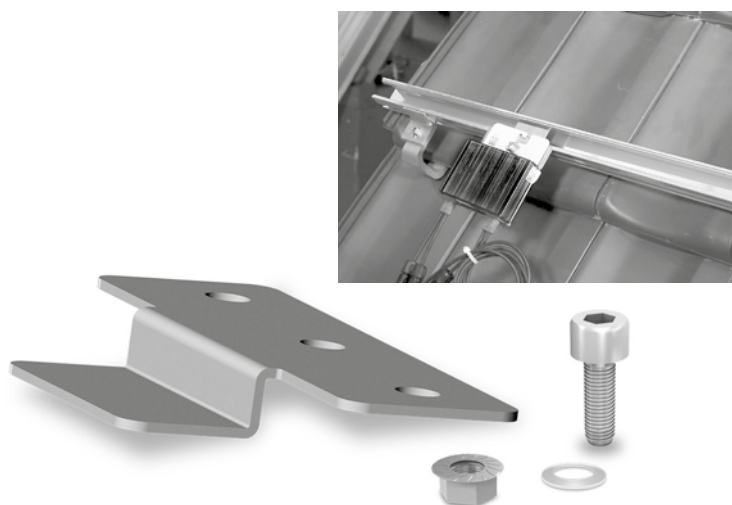
Item number: 1000273



StairPlate-Set

With the K2 StairPlate Set, Micro Inverters and Optimizers from Solar Edge and Enphase can be hooked onto all K2 rails [except K2 MiniRail and MicroRail] without bolting them directly to the roof. The units can be connected to the K2 StairPlate in advance using the screws and nuts included in the set. The height of the modules and the units to be used must be taken into account. Material: Stainless steel

Item number: 2004057



Lightning protection clamp Multi Sets

Lightning protection clamp for clamping lightning protection cables with \varnothing 8 mm. For universal use as a T cross, parallel and impact clamps. Material: aluminium



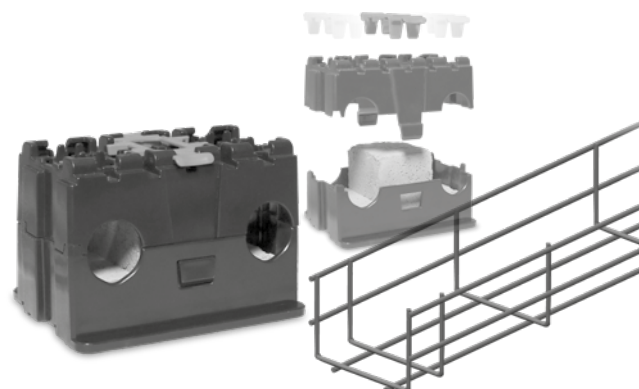
Image	Type	Components	Item number
	Lightning protection clamp Multi Alu 8 mm Set	<ul style="list-style-type: none"> Lightning protection clamp Multi (1003151), aluminium Slot nut (1001643), stainless steel, PA Washer (8,4 × 20 × 1.2 mm), stainless steel A2 Allen Bolt (M8×30), stainless steel A2 	2002473
	Lightning protection clamp 8 mm Double Set	<ul style="list-style-type: none"> 2× lightning protection clamps Multi (1003151), aluminium Hexagon flange nut with serration M8 (100043); stainless steel A2 2× washers (8,4 × 20 × 1.2 mm), stainl. steel A2 Allen Bolt (M8×40), stainless steel A2 	2002474

Flat roof cable routing

Multifunctionale cable management

The UV-resistant PVX Multimount provides a multifunctional cable management system for mesh tray and/or pipes on flat roofs and is made from 80 % recycled plastic. Compatible grid channel also available in the range. Material: PE and ASA

Type	Item number
PVX	2003137
Performa Mesh Tray 70 × 100 × 3000 mm	2004054
Performa Mesh Tray Connector	2004055



Accessories

Dome Speed Spacer

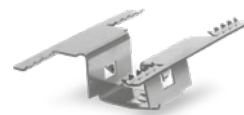
Simple alignment of the rails on the roof with the help of the flexible spacing gauge. Simply adjust the module length and set up the rail spacing. Suitable for all K2 flat roof systems
Item number: 2003253



TerraGrif equipontential bonding

Potential equalisation between module and rail.
Material: Stainless steel

Type	Item number
TerraGrif K2MI Landscape/Portrait	2002649
TerraGrif K2PA 32 Landscape	2000055
TerraGrif U17 Portrait	2000056
TerraGrif K2SZ Landscape/Portrait	2001881



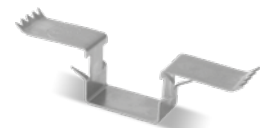
K2MI



K2PA



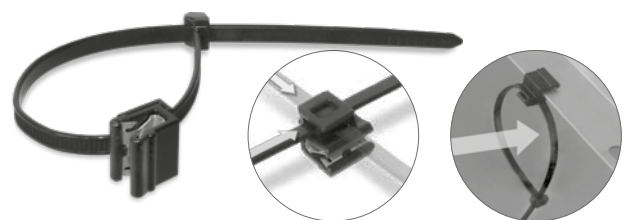
U17



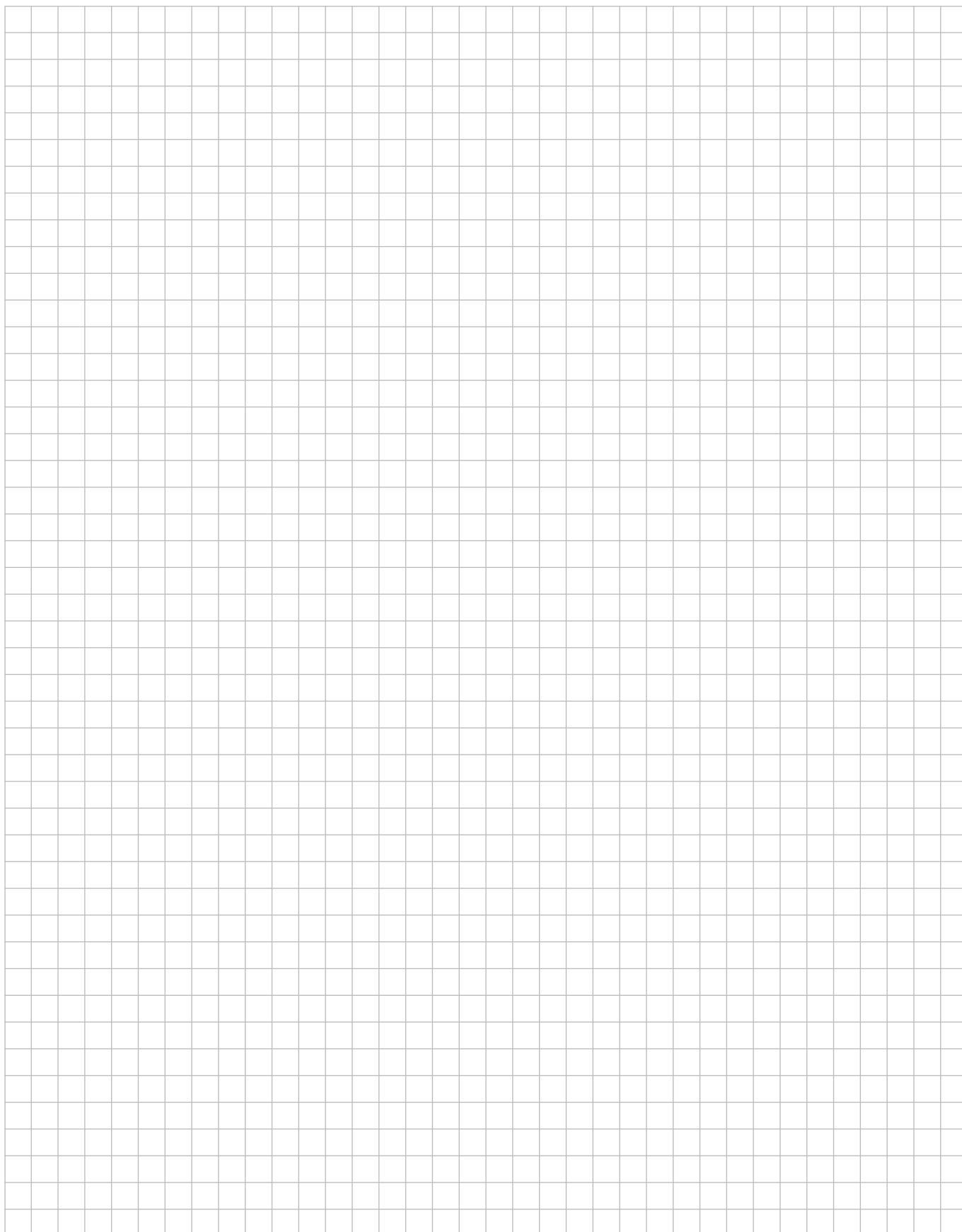
K2SZ

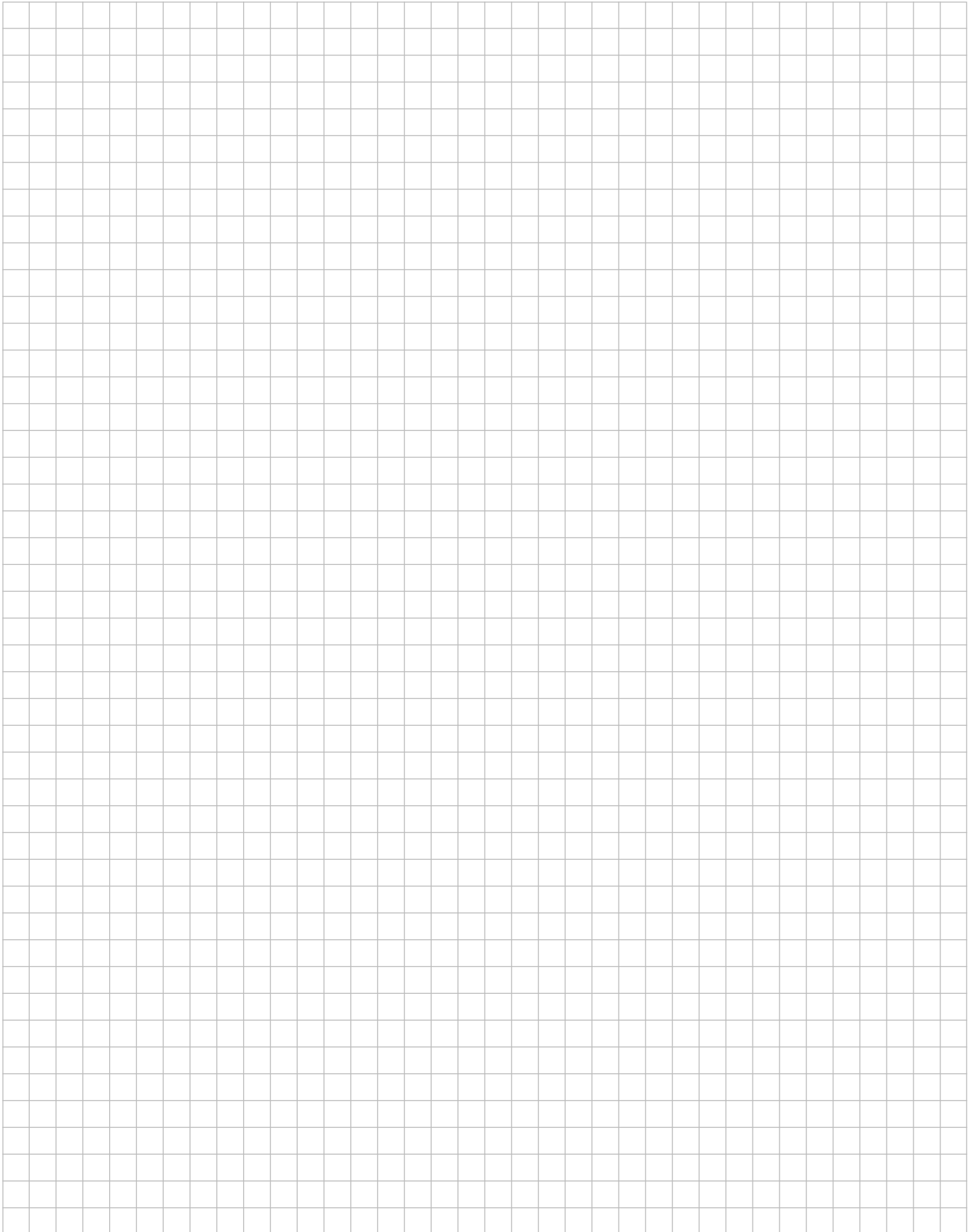
Cable Manager

Solar Cable Manager with connecting possibility for outdoor-installation L x W: 200 x 4.6 mm.
Item number: 2002870



Notes

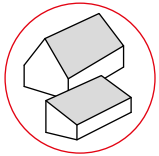




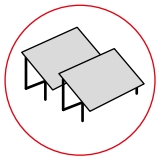
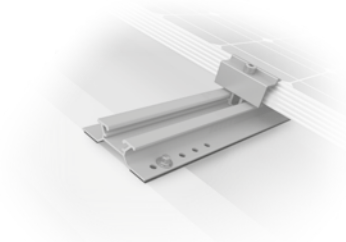
We support PV systems



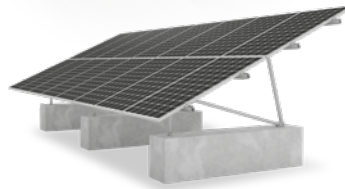
Other K2 systems



▶ Pitched roof systems



▶ Ground mounted systems



K2 Systems GmbH

Industriestraße 18
71272 Renningen
Germany

+49 7159 - 42059 - 0
info@k2-systems.com
www.k2-systems.com