

ESDEC

INNOVATIVE MOUNTING SYSTEMS



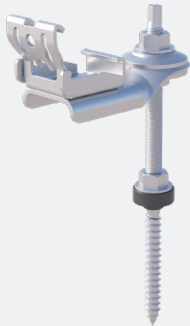
**RELIABLE
AND QUICK
INSTALLATION ON
PITCHED ROOFS**

CLICKFIT EVO

EPDM AND BITUMEN ROOF

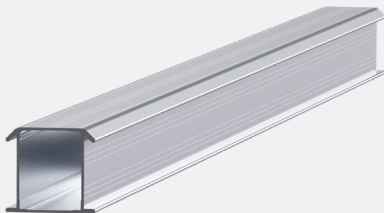
www.esdec.com

THE 4 COMPONENTS OF CLICKFIT EVO



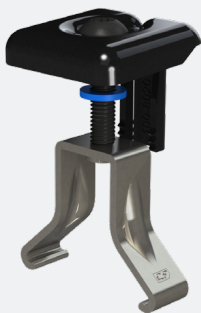
1. CLICKFIT EVO HANGER BOLT

- Fully preassembled hanger bolt
- Height adjustable
- Compensates for roof irregularities up to 10 degrees
- Can be rotated by 360 degrees
- Self-aligning click connection: easy and quick
- Mounting rail can be installed horizontally or vertically
- For both landscape and portrait positioning of solar panels
- For new builds and existing buildings
- Available in three lengths and two thicknesses for wood purlins/trusses



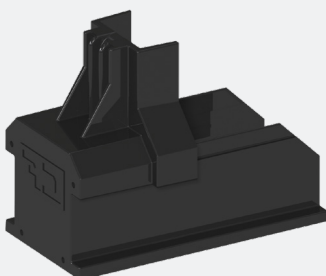
2. MOUNTING RAIL

- 30% stronger
- 30% lighter
- Suitable for larger roof spans



3. UNIVERSAL MODULE CLAMP

- Suitable for all framed solar panels
- Can be used as centre clamp or as end clamp in combination with end cap
- Standard assembly
- Including equipotential bonding for the solar panels
- Available in grey and black



4. END CAP

- End cap holds the module clamp in its position
- Elongated end cap to allow for aesthetically pleasing finish
- Available in grey and black



EASY INSTALLATION ON THE ROOF

ClickFit EVO for EPDM and Bitumen Roofs

ClickFit EVO for EPDM and Bitumen Roofs has been specially developed for use with the well-known ClickFit EVO system on EPDM and bitumen roofs, as are often found on business premises with pitched roofs. This straightforward system consists of just four components and can be installed on both existing and new roofs. The preassembled hanger bolt features the familiar ClickFit Evo click connection. The unique universal properties of this system let you install solar panels quickly and easily on pitched roofs.

The hanger bolt compensates for roof irregularities of up to 10 degrees

With the ClickFit EVO Hanger Bolt, you can quickly install solar panels on all types of EPDM and bitumen roofs. The hanger bolt is provided pre-assembled and the flexible adapter allows you to easily and quickly compensate for roof irregularities of up to 10 degrees. Using the universal ClickFit EVO click connection fitted to the hanger bolt as standard, you can simply carry on working with familiar components from the ClickFit EVO product line, such as universal rails, module clamps and end caps. As well as being suitable for EPDM and bitumen roofs, the hanger bolt can also be used on corrugated, steel and Arabic tiles.

Mounting on an EPDM and bitumen roof

Not all types of EPDM and bitumen roofs are suitable for mounting with hanger bolts: in this case the thermal effect, and thus the watertightness, of the roof covering is affected as soon as it has been drilled into. Therefore, consult a roofing specialist for advice before installing.

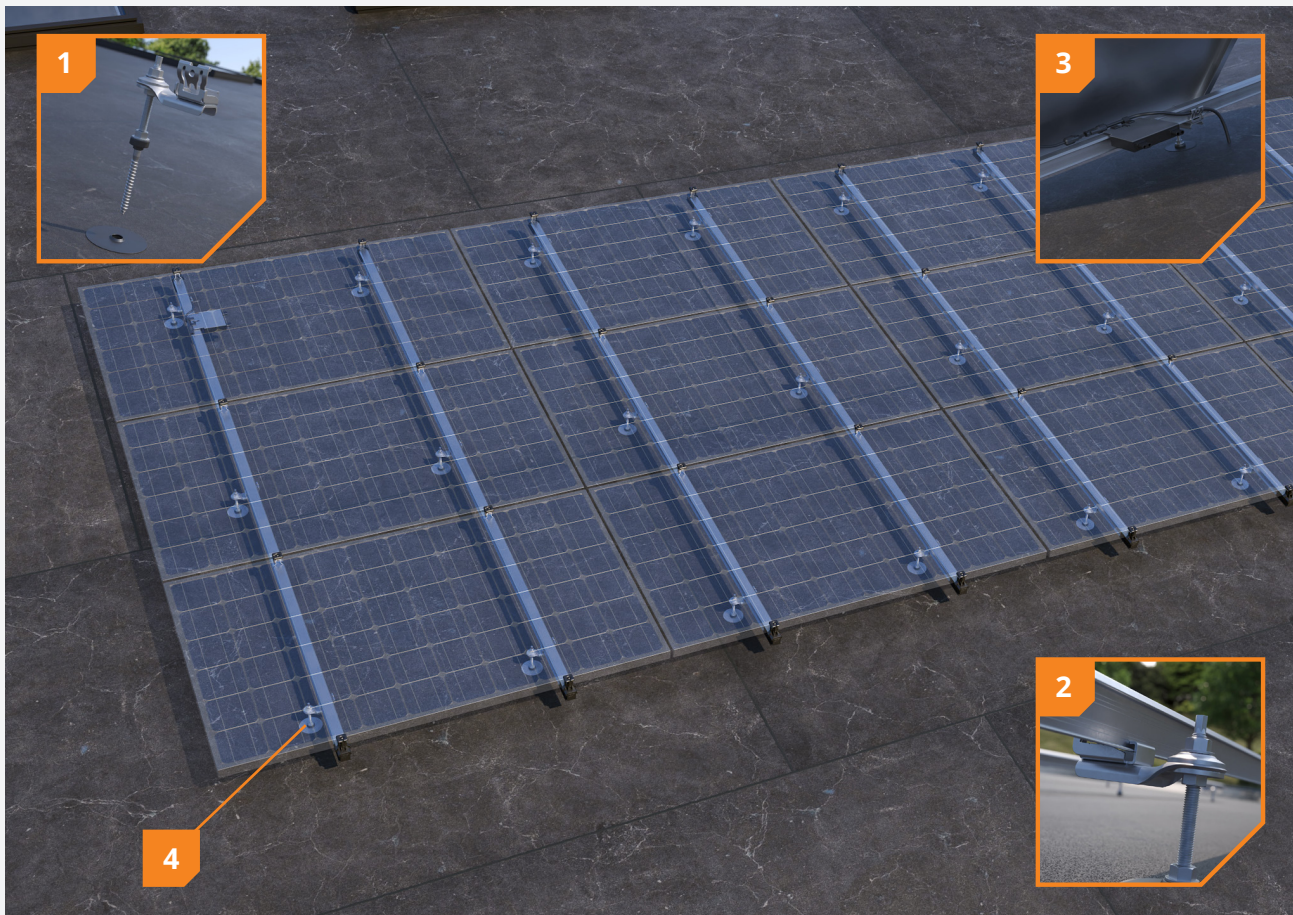
If the roof substructure is made from an engineered wood board with a minimum thickness of 50 mm, you can install the hanger bolts where you want. Otherwise, you must first locate the purlins/trusses. The hanger bolt must then be mounted in the purlin/truss. It is also important to ensure the area is waterproofed again when mounting the hanger bolt on an EPDM or bitumen roof. To do this, use a sealant suitable for the type of roof covering and the corresponding washer. You can even include these in your original order, it couldn't be easier! The project plan created by our calculator includes details of exactly how much sealant and how many washers you require.

ADVANTAGES FOR THE INSTALLER

- ✔ Both landscape and portrait placement
- ✔ Four components on the roof
- ✔ Only one tool needed
- ✔ Quick and easy installation
- ✔ 20-year product warranty

ADVANTAGES FOR YOUR CUSTOMER

- ✔ 100% waterproof
- ✔ Aesthetic design, also available in black
- ✔ Comprehensively tested
- ✔ 20-year product warranty



1 Unique hanger bolt

The hanger bolt is delivered in preassembled form. Using the flexible adapter, the hanger bolt can also compensate for roof irregularities of up to 10 degrees.

2 Fitted with a ClickFit EVO click connection

The hanger bolt features a self-aligning click connection. This makes it easy to install the mounting rail from above.

3 Integrated cable management

Cables and plugs can be held in place neatly and securely at all times in both the click connection on the hanger bolt and the cable clip. The optimizer can also be easily clicked onto the cable clip.

4 Always the right size

The universal module clamp is suitable for all framed solar panels. It can be used as a central module clamp or – in combination with an end cap or end clamp support – as an end clamp.

ROOF FASTENERS



ClickFit EVO Hanger Bolt

M10x200mm	1008011
M10x250mm	1008012
M12x250mm	1008013
M12x300mm	1008014
M12x350mm	1008015 [DTO]

MOUNTING RAIL



ClickFit EVO Mounting rail

Mounting rail 1188mm	1008131
Mounting rail 2338mm	1008132
Mounting rail 3488mm	1008133
Mounting rail 3500mm	1008007
Mounting rail 4638mm	1008134
Mounting rail 5770mm	1008135

MODULECLAMP & END CAP



ClickFit EVO Module Clamp Universal grey

1008020



ClickFit EVO Module Clamp Universal black

1008020-B



ClickFit EVO Mounting rail End cap grey

1008060



ClickFit EVO Mounting rail End cap black

1008060-B



ClickFit EVO End Cap without end clamp support grey

1008066



ClickFit EVO End Cap without end clamp support black

1008066-B



ClickFit EVO End Clamp Support grey

1008065



ClickFit EVO End Clamp Support black

1008065-B

ACCESSOIRES



ClickFit EVO Mounting Rail Connector Piece

1008061



ClickFit EVO Mounting Rail Cable clip optimiser ready

1008062



ClickFit EVO self-drilling sheet metal screw

1003015 (required for vertical rail installation)



ClickFit EVO Auxiliary set with cable clip

1008064



ClickFit EVO bit torx 30

1008069



Kit for EPDM Roofing

1008086



Shell Tixophalte Kit for Bitumen Roofing

1003900



Hanger Bolt Washer Inox 80mm

1003070

Calculator

In the Esdec calculator you can manage and calculate all your projects, for both pitched and flat roofs. One platform with all Esdec mounting systems for the most reliable calculation of your project.

- ✓ Save time: manage all your projects on one platform
- ✓ One calculator for projects on pitched and flat roofs
- ✓ All calculations are based on extensive testing and the latest safety standards

Go to eu.esdec.com/en/calculator



Warranty

ClickFit EVO meets all of the requirements and standards that currently apply. ClickFit EVO comes with a unique 20-year warranty, thus ensuring the system's quality.

- ✓ Use of premium high tech materials
- ✓ Extensively tested
- ✓ BDA/KIWA certification
- ✓ 20 years' warranty





**BUILDING VALUE⁺ FOR
SOLAR PROFESSIONALS**

Esdec

Londenstraat 16
7418 EE Deventer
The Netherlands

☎ +31 850 702 000

✉ info@esdec.com