

# ESDEC

INNOVATIVE MOUNTING SYSTEMS



**RELIABLE  
AND QUICK  
INSTALLATION ON  
PITCHED ROOFS**

**CLICKFIT** EVO

ARABIC TILES

[www.esdec.com](http://www.esdec.com)

# THE 4 COMPONENTS OF CLICKFIT EVO



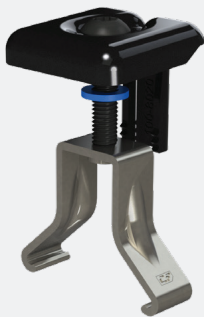
## 1. CLICKFIT EVO HANGER BOLT

- Fully preassembled hanger bolt
- Height adjustable
- Compensates for roof irregularities up to 10 degrees
- Can be rotated by 360 degrees
- Self-aligning click connection: easy and quick
- Mounting rail can be installed horizontally or vertically
- For both landscape and portrait positioning of solar panels
- For new builds and existing buildings
- Available in three lengths and two thicknesses for wood purlins/trusses



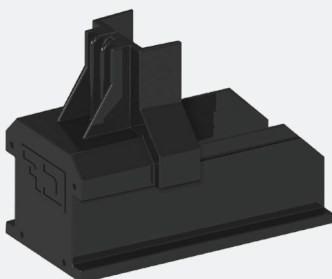
## 2. MOUNTING RAIL

- 30% stronger
- 30% lighter
- Suitable for larger roof spans



## 3. UNIVERSAL MODULE CLAMP

- Suitable for all framed solar panels
- Can be used as centre clamp or as end clamp in combination with end cap
- Standard assembly
- Including equipotential bonding for the solar panels
- Available in grey and black



## 4. END CAP

- End cap holds the module clamp in its position
- Elongated end cap to allow for aesthetically pleasing finish
- Available in grey and black



## EASY INSTALLATION ON THE ROOF

### ClickFit EVO Arabic tiles

ClickFit EVO Arabic tiles has been specially developed for use with the existing ClickFit EVO system on roofs with Arabic tiles. This straightforward system consists of just four components and can be installed on both existing and new roofs. The preassembled hanger bolt features the familiar ClickFit EVO click connection. The unique universal properties of this system let you install solar panels quickly and easily on pitched roofs.

### The hanger bolt compensates for roof irregularities of up to 10 degrees

With the ClickFit EVO Hanger Bolt, you can quickly install solar panels on all types of Arabic tiles. The hanger bolt is provided pre-assembled and the flexible adapter allows you to easily and quickly compensate for roof irregularities of up to 10 degrees. Using the universal ClickFit EVO click connection fitted to the hanger bolt as standard, you can simply carry on working with familiar components from the ClickFit EVO product line, such as universal rails, module clamps and end caps. As well as being suitable for Arabic tiles, the hanger bolt can also be used on corrugated, steel, EPDM and bitumen roofs.

### Mounting on an Arabic tiled roof

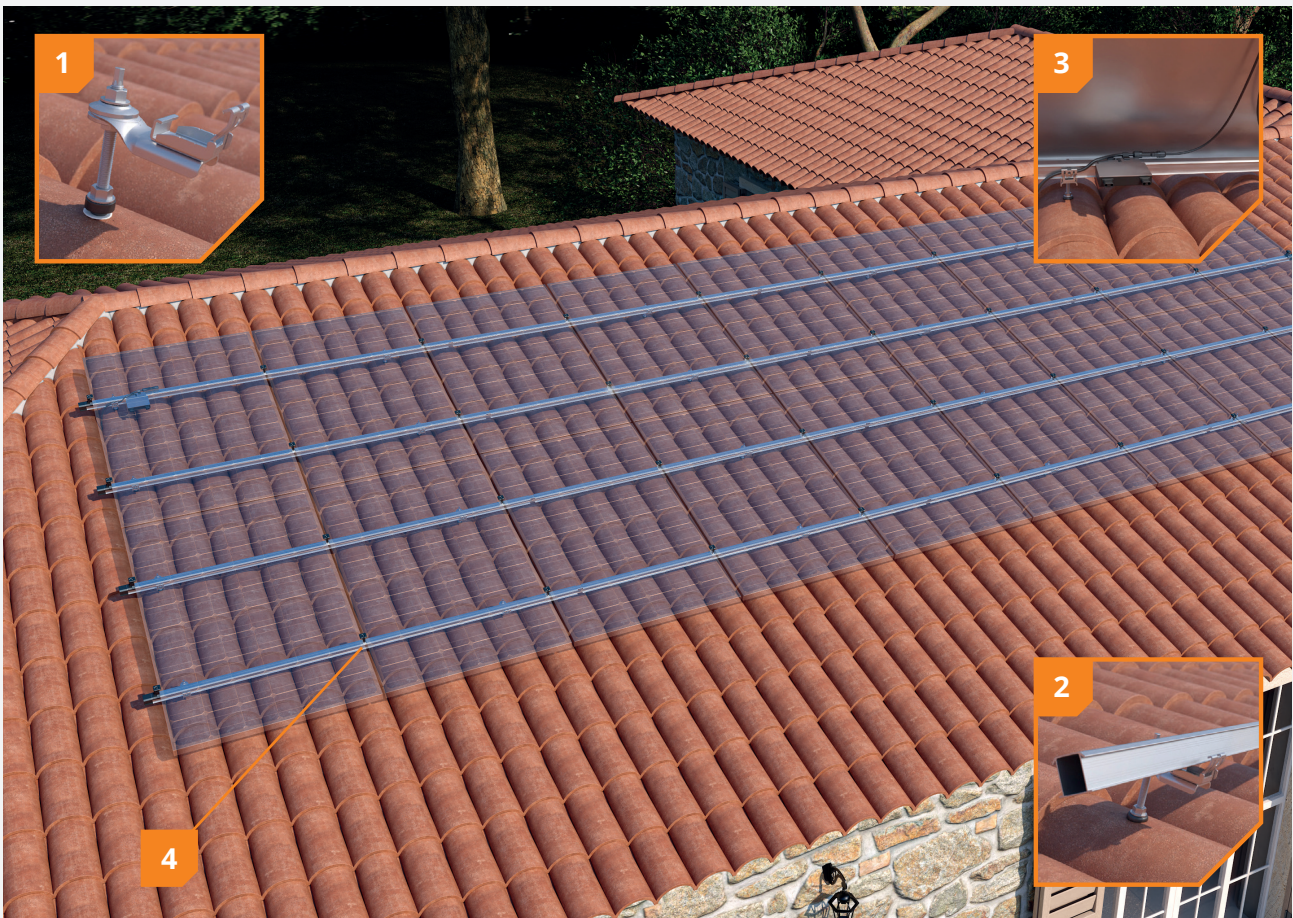
If the cement layer beneath the tile is sufficiently thick, you can install the hanger bolt where you want. For thicknesses of less than 100 mm, you must locate the purlins/trusses. The hanger bolt must then be mounted in the purlin/truss. It is also important to ensure the area is water tight when mounting the hanger bolt on an Arabic tiled roof. Use a chemical anchor for this. Consult your supplier about the available options.

#### ADVANTAGES FOR THE INSTALLER

- ✔ Both landscape and portrait placement
- ✔ Four components on the roof
- ✔ Only one tool needed
- ✔ Quick and easy installation
- ✔ 20-year product warranty

#### ADVANTAGES FOR YOUR CUSTOMER

- ✔ 100% waterproof
- ✔ Aesthetic design, also available in black
- ✔ Comprehensively tested
- ✔ 20-year product warranty



**1 Unique hanger bolt**

The hanger bolt is delivered in preassembled form. Using the flexible adapter, the hanger bolt can also compensate for roof irregularities of up to 10 degrees.

**2 Fitted with a ClickFit EVO click connection**

The hanger bolt features a self-aligning click connection. This makes it easy to install the mounting rail from above.

**3 Integrated cable management**

Cables and plugs can be held in place neatly and securely at all times in both the click connection on the hanger bolt and the cable clip. The optimizer can also be easily clicked onto the cable clip.

**4 Always the right size**

The universal module clamp is suitable for all framed solar panels. It can be used as a central module clamp or – in combination with an end cap or end clamp support – as an end clamp.

## ROOF FASTENERS



### ClickFit EVO Hanger Bolt

M10x200mm	1008011
M10x250mm	1008012
M12x250mm	1008013
M12x300mm	1008014
M12x350mm	1008015 [DTO]

## MOUNTING RAIL



### ClickFit EVO Mounting rail

Mounting rail 1188mm	1008131
Mounting rail 2338mm	1008132
Mounting rail 3488mm	1008133
Mounting rail 3500mm	1008007
Mounting rail 4638mm	1008134
Mounting rail 5770mm	1008135

## MODULECLAMP & END CAP



ClickFit EVO Module Clamp Universal grey  
1008020



ClickFit EVO Module Clamp Universal black  
1008020-B



ClickFit EVO Mounting rail End cap grey  
1008060



ClickFit EVO Mounting rail End cap black  
1008060-B



ClickFit EVO End Cap without end clamp support grey  
1008066



ClickFit EVO End Cap without end clamp support black  
1008066-B



ClickFit EVO End Clamp Support grey  
1008065



ClickFit EVO End Clamp Support black  
1008065-B

## ACCESSOIRES



ClickFit EVO Mounting Rail Connector Piece  
1008061



ClickFit EVO Mounting Rail Cable clip optimiser ready  
1008062



ClickFit EVO self-drilling sheet metal screw  
1003015 (required for vertical rail installation)



ClickFit EVO Auxiliary set with cable clip  
1008064



ClickFit EVO bit torx 30  
1008069

## Calculator

In the Esdec calculator you can manage and calculate all your projects, for both pitched and flat roofs. One platform with all Esdec mounting systems for the most reliable calculation of your project.

- ✔ Save time: manage all your projects on one platform
- ✔ One calculator for projects on pitched and flat roofs
- ✔ All calculations are based on extensive testing and the latest safety standards

Unlimited calculations: use the calculator for your own project calculations without limits on the roof height. The calculator also takes into account the terrain category, snow load and wind zone to provide accurate advice, specific to your project.

Go to [eu.esdec.com/en/calculator](https://eu.esdec.com/en/calculator)



## Warranty

ClickFit EVO meets all of the requirements and standards that currently apply. ClickFit EVO comes with a unique 20-year product warranty, thus ensuring the system's quality.


- ✔ Use of premium high tech materials
- ✔ Extensively tested
- ✔ BDA/KIWA certification
- ✔ 20 years' product warranty



10062022

# BUILDING VALUE FOR SOLAR PROFESSIONALS

**Esdec**  
Londenstraat 16  
7418 EE Deventer  
The Netherlands

 +31 850 702 000  
 [info@esdec.com](mailto:info@esdec.com)

